



Business Meeting

July 2, 2020

(15.00 GMT, Online Zoom)



Your Council

Marta Wayne, President

Aoife McLysaght, Past President

Harmit Malik, President-Elect

Nadia Singh, Secretary

Jeffrey Thorne, Treasurer

Belinda Chang, Councillor (2018-2020)

Nicholas Galtier, Councillor (2018-2020)

Mary O'Connell, Councillor (2019-2021)

Beth Shapiro, Councillor (2019-2021)

Stephen Isaac Wright, Councillor (2020-2022)

Sarah Schaack, Councillor (2020-2022)

Adam Eyre-Walker, ex officio Councillor (Editor-in-chief, *Genome Biology and Evolution*)

Laura A. Katz, ex officio (Editor-in-chief, *Genome Biology and Evolution*)

Sudhir Kumar, ex officio (Editor-in-chief, *Molecular Biology and Evolution*)



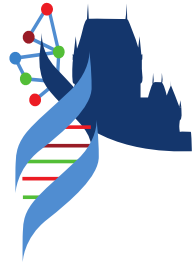
SMBE 2020 online symposia

Fitch Symposium: Videos premiered on the SMBE YouTube channel on 30 June, 2020

Hannes Dittberner, Malgorzata Gazda, Alina G Mikhaylova, Rachel Moran, Elora Hayter López and Matt Shepherd.

Faculty Awards Symposium: Videos premiered on the SMBE YouTube channel on 1 July 2020.

Iain Mathieson, Christian Landry, and Brian Charlesworth



SMBE 2020

Québec City

June 28 - July 2

SMBE Undergraduate Mentorship awards

Short listing and selection by Council Members Sarah Schaack and Mary O'Connell

Total of 14 Applications for 10 awards. Female = 9 Male = 5

Geographic distribution:

6 USA, 2 Canada, 2 Russia, 1 Sweden, 1 Japan, 1 New Zealand, 1 Greece

We selected 10 applicants and 2 reserves, contacted and accepted awards – preparations for travel had begun ... Covid19 hits: Awardees were subsequently notified that meeting was not happening.

Membership Type (does not include MBE access)	Term	Price
Regular Society Membership (no journal)	3 years	\$30.00
Student or Postdoc Society Membership (no journal)	3 years	\$10.00

MBE Print/Online Add On Items (does not include society membership)	Term	Price
MBE Online Only	1 year	\$25.00
MBE Print & Online	1 year	\$120.00

Membership Category	2018	2019	2020	2021	2022
Gratis Membership Worldwide Print&Online	48	47	45		
Gratis Membership Worldwide No Journal	76	86	87		
Gratis Membership Worldwide Online Only	1	5	1		
Lifetime Member Worldwide Print&Online	70	81	87	87	87
Lifetime Member Worldwide Online Only	3	6	7	7	7
2-YEARS Society Membership Worldwide No Journal	347				
3-YEAR Society Membership Worldwide No Journal	644	1204	1263	989	343
2-YEARS Society Membership Student Worldwide No Journal	502				
3-YEAR Society Membership Student Worldwide No Journal	552	831	827	629	293
Taster Membership		314			
	2243	2574	2317	1712	730

2020 Membership Update

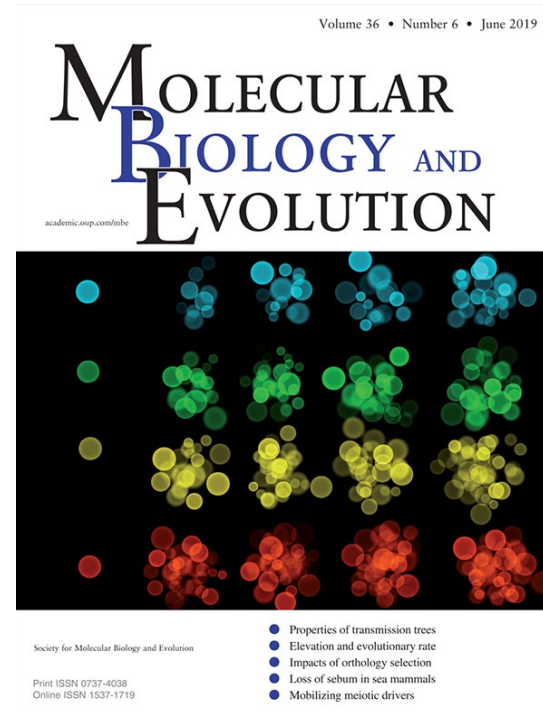
- With 2,317 current members, SMBE membership is down nearly 10% from 2019. This is tied to only 9 “Taster” members renewing for 2020. It is worth noting that 2020 membership is higher than 2018 and the perceived dip in 2020 should not cause alarm.
- SMBE will begin 2021 with more than 1,700 paying members by default due to the multi-year membership cycle.
- Membership renewals will be sent in the late fall to the 700+ paying members expiring at the end of 2020. This will include communication about purchasing an add-on subscription to *MBE*.
- 35.69% of members are students (up from 34% in 2019)
- 158 SMBE Members (6.8%) subscribed to *MBE* in 2020. This is down 1.1% over 2019.
 - Online only – 21 (13.29%)
 - Print & Online – 137 (86.71%)

Benefits of Membership

- Reduced registration at the annual meeting
- Eligibility for travel awards and registration waiver awards
- Eligibility for prizes (Best Graduate Student paper in MBE and GBE; Fitch Prize)
- Eligibility for career achievement awards
- Eligibility to apply for funds for satellite meetings
- Eligibility for carer supports (child, adult dependent, or self)
- ****NEW**** Discounted publication charges for MBE and GBE
- Being part of a community

Molecular Biology and Evolution (MBE)

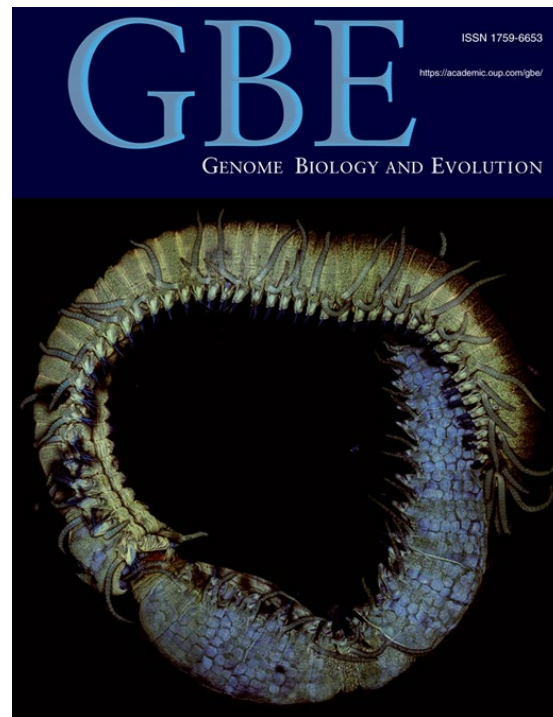
- 2018 impact factor **14.797**
- Over 1200 submissions in 2019
- MBE has been making a strong effort to diversify the editorial board wrt both gender and geography (esp. China) in our board of editors and still strive to welcome a greater diversity of new editors to further fill the scientific and societal gaps that exist in our board.
- MBE is moving to Open Access in 2021 (all manuscripts submitted after 1 August 2020)



Sudhir Kumar, EiC

Genome Biology and Evolution (GBE)

- GBE Impact Factor 2018 **3.73**
- We introduced a number of new initiatives in 2019, including new special sections, virtual special issues and revised author guidelines. Fee-waivers are available to authors without funding.
- In 2020, we revamped our editorial board to further increase diversity including expertise, maintain gender balance, increase other aspects of diversity, geography, institution type and will continue to do so annually.



Laura Katz, EiC



Adam
Eyre-Walker, EiC

2020 Election Results



President-Elect:
James McInerney



Treasurer:
John McCutcheon



Councillor:
Josefa González



Councillor:
Katerina Guschanski





- Thank you to the Quebec LOC:

**Christian Landry,
Université Laval**

**Louis Bernatchez,
Université Laval**

**Gertraud Burger,
Université de Montréal**

**Nadia Aubin-Horth,
Université Laval**

**Franz Lang,
Université de Montréal**

**France Dufresne,
Université du Québec à Rimouski**

SMBE Online 2021

- President-elect and two Council Liaison will reach out to the membership to decide on the format for 2021 and to form a Committee to select Abstracts and act as 'LOC'.
- Option to have a three-hub model, one in Europe/Africa, one in the Americas, and one in Aus/NZ?
- Registration fee or not? Members free or cheaper?
- We welcome ideas and energy from the membership!

New Zealand 2022

01 YOUR LOCAL HOST





SMBE 2023, FERRARA, ITALY

Future SMBE meetings



- 2021 Online
- 2022 Auckland, New Zealand
- 2023 Ferrara, Italy

Proposals for SMBE 2024
will be considered in Fall 2020.

SMBE 2020 Developments

- Reimbursements to registrants SMBE 2020 are now underway
- Make MBE fully Open Access
- Move online for SMBE 2021 (and partially online thereafter?)
- New Initiatives to further increase diversity and to counteract racism in [our] society; safe SMBE

Progress on Diversity, Equity, and Inclusion

Challenge: Maximize council engagement, maximize membership engagement, and make change.

- > Task force on DEI
- > Charge to task force
- > Transparency and accountability

Safe SMBE, Code of Conduct, and Values statement:
Sarah Schaack, Nadia Singh, Stephen Wright

Your feedback needed and desired!